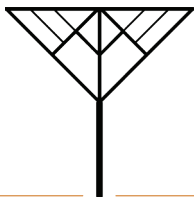


EXTRAORDINARY VISION



MADISON COUNTY CONSERVATION CENTER
CAPITAL CAMPAIGN



Standing the Test of Time

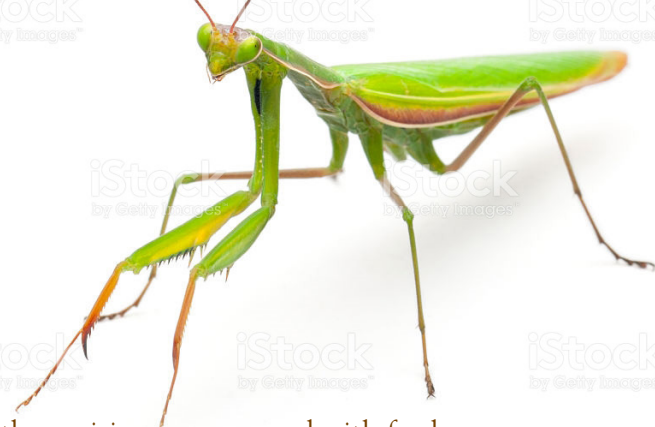
OUR MISSION

The Conservation Board, through environmental education and outdoor recreation, teaches children and adults how to learn about and discover their natural surroundings with the intent to stimulate them to actively participate in their roles as stewards of their environment.

OUR VISION

The Conservation Center will serve to foster care about the natural beauty of Madison County — a landform known as the Southern Iowa Drift Plain, where rolling hills were formed from glacial till and molded by wind-blown loess soils and scouring rivers and streams. The Conservation Center will use these natural elements to tell a story about the legacy of our land and how it shaped our civilization.

- **Geology:** Bedrock of limestone formed millions of years ago from the layering of sediment of ancient oceans prior to glaciation periods, with many limestone outcroppings now exposed by the mighty forces of erosion.
- **Water/Rivers:** Tens of thousands of years of scouring and meandering around bedrock formations, creating striking river valleys.
- **Forests:** A diversity of ecosystems ranging from open space Oak-Savanna to upland Oak/Hickory clinging to steep ridges and finally damp Alluvial flood plain timber all with a lush understory of unique vascular plants.
- **Grasslands:** Sweeping vistas of tall grass prairie and colorful flowers, locals referred to it as the “Hoosier prairie,” with downy seed heads tossed in wave like movement by the wind, and colors changing seasonally as the foliage of trees.
- **Wildlife:** Bison, elk and deer once roamed this region. Although civilization has altered our wildlife diversity, it still remains wild and diverse.



“When the prairies were covered with fresh green grass, when the lily, the sweet-william and the prairie rose were in full bloom . . . around the edges of the timber the lady-slipper and wild tiger lily grew . . . those beautiful sugar maples, those splendid black walnuts, those noble cottonwoods that used to line our streams . . . I would like once more to see the green prairies with their beautiful flowers, the trees standing, the springs flowing as they did in the days of my youth.”

– Judge William Henry Lewis, May 1904
Three River Country, Madison County

