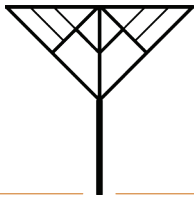


EXTRAORDINARY VISION



MADISON COUNTY CONSERVATION CENTER
CAPITAL CAMPAIGN

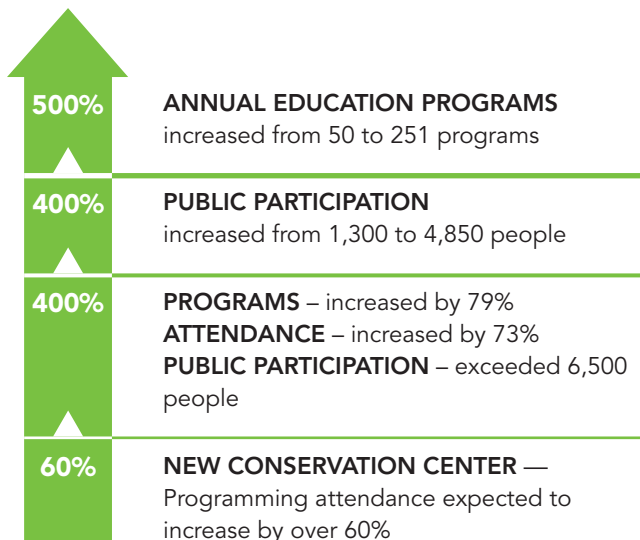


Environmental Protection Through Education

Since the establishment of a formal environmental education program in 2001, the Conservation Board has devoted increasingly greater resources toward a rapidly expanding outdoor education program.

The Conservation Board believes that the investment in environmental education and mentoring knowledge about the outdoors is the most sustainable means of providing lasting environmental protection of our natural resources by not only enriching support for public lands, but more importantly, encouraging our citizenry to embrace similar practices in their daily lives and on their private lands.

Expansion of education programming over the last FIVE YEARS:



Our Goals

- UNDERSTAND** the benefits of the land and water systems distinct to the Southern Iowa Drift Plain
- STIMULATE** with powerful interactive exhibits
- INCREASE** year-round environmental education opportunities
- COORDINATE** expanded networking with schools through innovative STEM-based (Science, Technology, Engineering & Math) programming
- OFFER** a "destination site" for tourists and park users
- CREATE** a sense of exploration and discovery of the outdoors

“As a school district, we value our strong partnership with the Madison County Conservation Board. The opportunities our students have been afforded beyond the classroom walls extends their learning and ignites their passion for science and the natural environment.

As the Conservation Board and Winterset Community Schools have worked together to enhance our outdoor classroom, the addition of a conservation center opens up even more opportunities for our students to learn, grow and develop a love for the natural surroundings within Madison County.”

– Dr. Susie Meade, Superintendent
Winterset Community Schools

